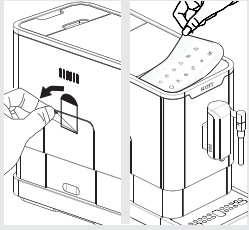
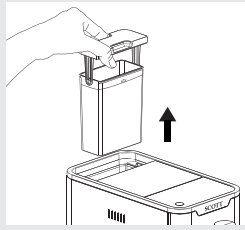


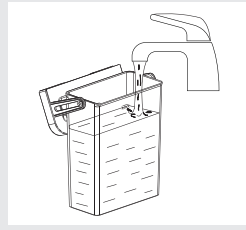
首次使用



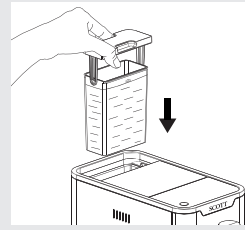
移除保護膠貼



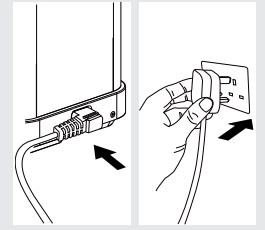
從咖啡機抽出水箱



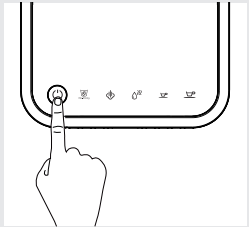
注滿清水至 MAX 位置



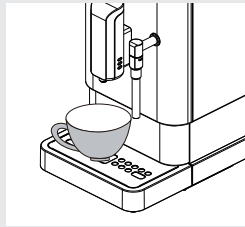
把水箱放回咖啡機



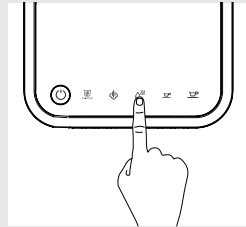
接上電源



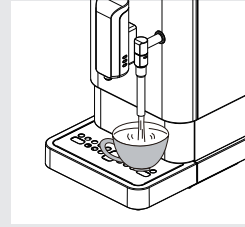
開啟本機



放置咖啡杯在咖啡嘴下

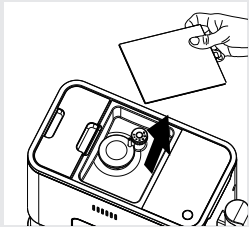


按住熱水按鈕以清洗內部零件

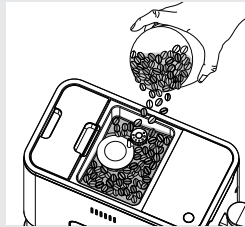


熱水會從奶管出來，清洗程序完成

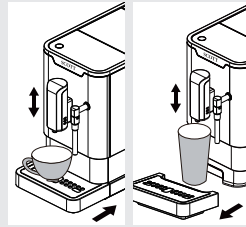
日常操作



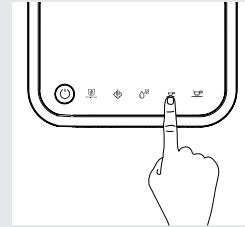
取出咖啡豆蓋



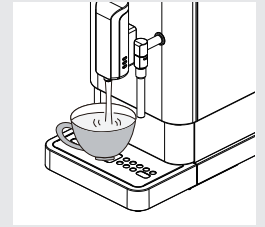
倒入咖啡豆，蓋上咖啡豆蓋



放置咖啡杯在咖啡嘴下

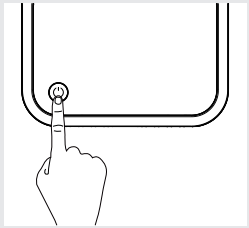


選擇特濃咖啡小杯 ☺ 或大杯 ☹

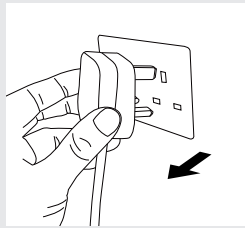


咖啡從咖啡嘴沖出，完成

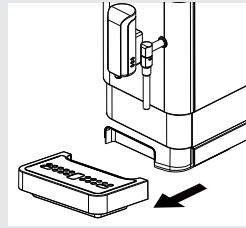
日常清洗



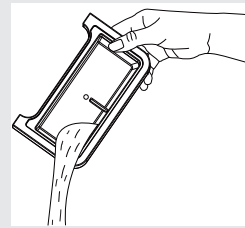
關閉本機



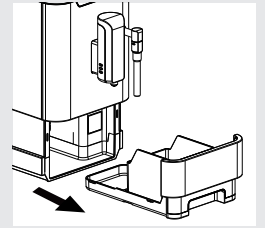
拔下電源線



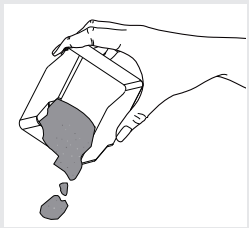
取出外置回水盒



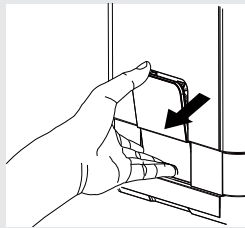
清空回水盒內的水



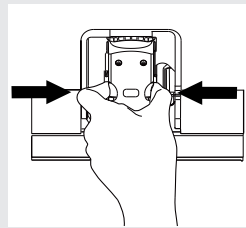
拉開內部回水盒和粉渣盒容器



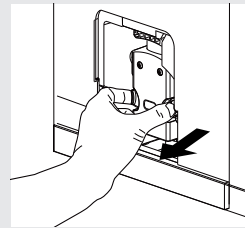
空粉渣盒並用清水沖洗，然後瀝乾



按下左邊機身門蓋



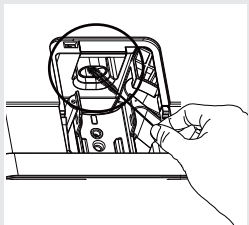
按下沖泡器兩邊的按鈕



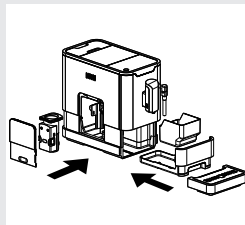
取出沖泡器



用清水沖洗沖泡器，然後瀝乾

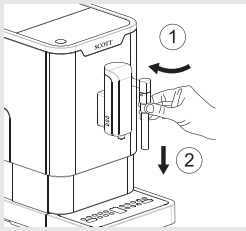


使用本機的清潔刷子清理內部出咖啡口位置

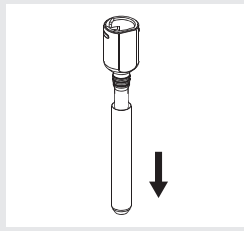


完成清洗所有部件，可放回原位置

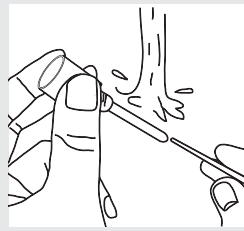
蒸氣奶管清洗



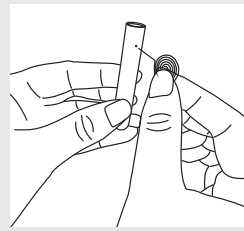
左扭噴嘴蓋解鎖並向下拉出



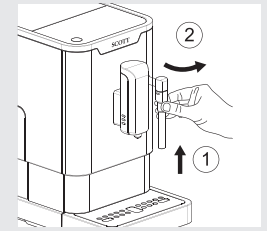
向下拉金屬管，以便解開噴嘴蓋和金屬管



用清水沖洗噴嘴蓋，並用針或毛刷清潔噴嘴蓋孔

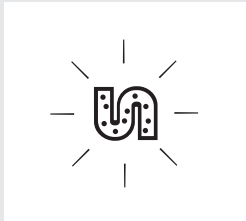



用清水沖洗金屬管，並用針或毛刷清潔金屬管孔

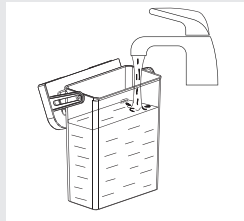


將金屬管裝回入噴嘴蓋。然後將噴嘴蓋放回原位，向上推動並右扭將其鎖定

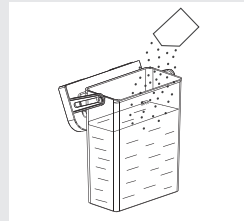
除垢



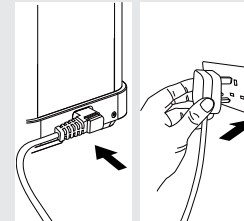
當  閃亮起時，表示本機需要進行自動清洗



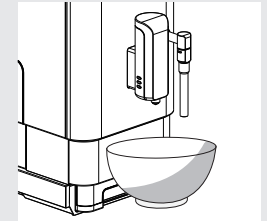
注滿水箱的水



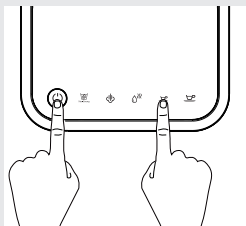
加入一包除垢劑到水箱內



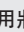
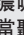


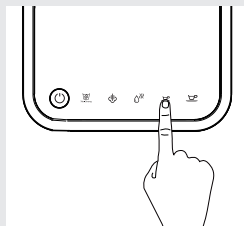
插入電源




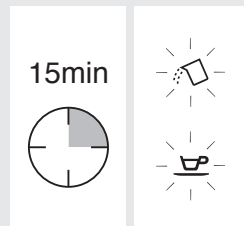
放置一個足夠大的器皿在咖啡嘴下，以盛載洗機後的溶液





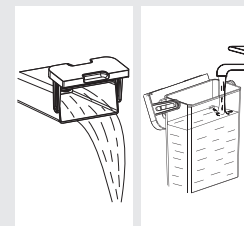
在備用狀態，同時按住  和特濃咖啡按鈕  5分鐘。當聽到提示聲， 和特濃咖啡按鈕  會閃爍



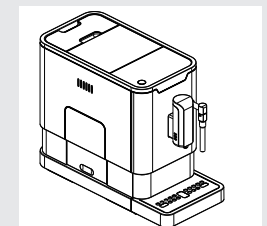
按特濃咖啡按鈕  以確認進行自動清洗過程



15分鐘後，當水箱中的所有水都被沖出來時， 和特濃咖啡按鈕  將會閃爍



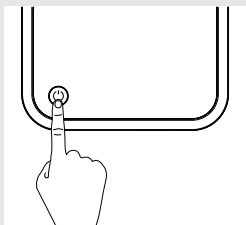
倒出水箱中的所有剩餘溶液並重新注滿清水至 MAX 位置，把水箱放回咖啡機，繼續餘下的清洗過程



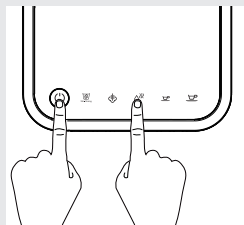
當自動清洗程序完成後，本機將自動關機

手動清洗

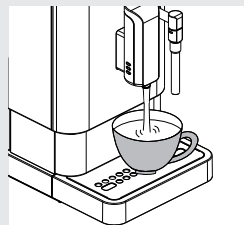
如長時間沒有使用咖啡機或進行“清空”功能，再次使用前，請務必使用“手動清洗”



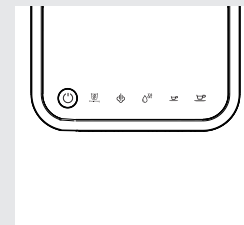
開啟本機



同時按住開關和熱水按鈕



然後咖啡嘴將噴出少量沖洗後的熱水。請小心熱水濺出



沖洗之後，本機將回到備用狀態